

SeconMap

A Powerful Mapping for Survey Agencies



<http://www.secon.in>

About SECON

SECON is an ISO 9001:2000 certified firm with over 800 personnel. In addition to Multidisciplinary design consultancy services, SECON provides end-to-end services on Geospatial & Engineering including Data Capture, Processing, Design & Drafting, GIS Based Customization and Application Development.

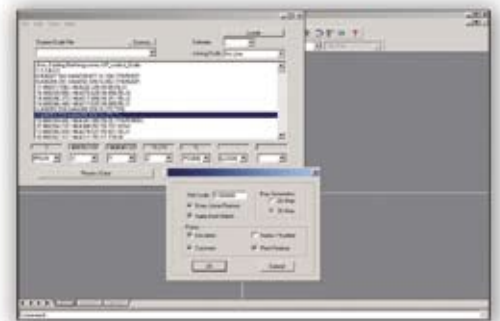
SECON's practice areas include:

- Comprehensive Engineering and Mapping solutions for Highways, Irrigation, Cross Country Pipelines, Infrastructure, Public Health Engineering etc. on Onshore - Offshore model
- Web-enabled Enterprise GIS and Software Development
- Photogrammetry, LiDAR and Satellite Image Processing
- GIS/ CADD Data Development and Maintenance
- Engineering Design Solutions

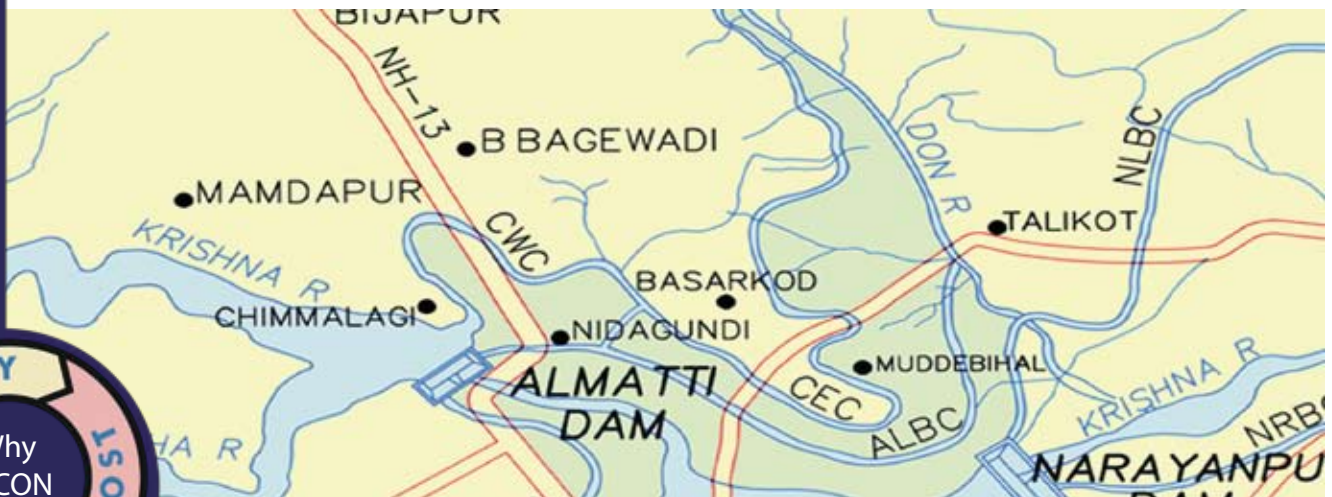
Introduction

SeconMap developed by SECON using Autodesk tools is an outstanding product used to generate automatic survey drawings. SeconMap is a 3D surface mapping program that runs under Microsoft Windows and AutoCAD 2004. It directly reads from the CSV (Comma Separated Value) file obtained from a TotalStation equipment and quickly plots the feature code along the alignment in its respective X, Y, Z coordinates.

The software is also supported by a .CDR file, which is a predefined feature code list used to plot the features. Using these feature code libraries the points and linear features are drawn. Virtually all aspects of a map can be customized to produce exactly the output required.



User Interface

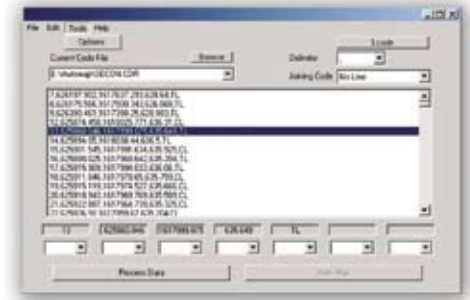


GIS is our Passion. Quality is our Commitment.

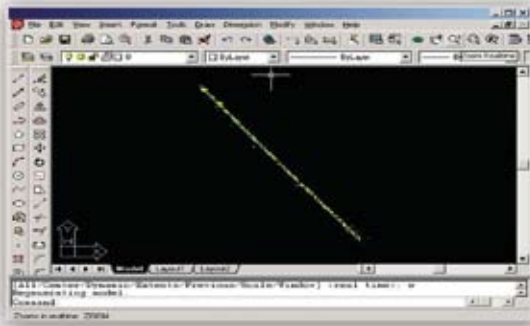
The application is robust enough to add new feature codes as and when required.

SeconMap has the capability to read the data in whichever order the information is stored. The system is so robust that it can plot from any make of Total Station.

This helps the surveyor to collect the details in industry standard formats and SeconMap will take care of the rest. The surveyor need not change his survey method to fit his data as per the software requirement, but SeconMap fits itself to suit every surveyor's methodology.



File Selection



Feature Code Plotted

Common platform is built to achieve quality and uniformity of data delivered by various contractors in the generation of engineering drawings, resulting in substantial reduction of supervisory staff.

Future enhancements of SeconMap :

Multi window option : Presently SeconMap supports single window interface. The future versions will concentrate on having multiple windows so as to support opening of multiple files simultaneously and plot the drawings.

Acceptance of raw data : Current version of SeconMap supports ASCII files downloaded from Total Station. The future version will read the raw data directly from the Total Station device and plot the drawing.

Survey Data Error Correction : Every survey data has some amount of errors. The next version of SeconMap will have features to rectify these errors before plotting the X, Y and Z coordinates.

In-built generation of Digital Terrain Model (DTM) and Contours : Currently the work is going on to incorporate the automatic generation of DTM and contours within SeconMap so as to provide complete solution under single window.

Contact Us

Bangalore Operations Center

Plot #147, 7B Road, Export Promotion Industrial Park (EPIP), Whitefield, Bangalore - 560 066 INDIA
Phone: (91) 80-41197778 Fax: (91) 80-41194277 Email: bd@secon.in Website: <http://www.secon.in>
From USA (Toll free): USA – 727-493-2214

Florida, USA

Dhyan Appachu,
SECON Private Limited LLC
10460 Roosevelt Blvd N, Ste 387
St Petersburg, FL 33716
Phone: 727-493-2214, Fax: 727-499-6945
E-mail: dhyan.appachu@secon.in

Libya:

Rupesh Shah,
SECON Private Limited
P.O Box 13456,
Tripoli, Libya
Phone: (218) 914624857
Email: rupesh.shah@secon.in