

Irrigation Resource Information System (IRIS)

A comprehensive GIS package for Irrigation Projects



<http://www.secon.in>

About SECON

SECON is an ISO 9001:2015, NABLA Accredited and CMMI Level 3 Certified Multidiscipline Engineering and Mapping Firm, established in 1981. SECON provides end-to-end services on Geospatial & Engineering including Data Capture, Processing, Design & Drafting, GIS Based Customization and Application Development.

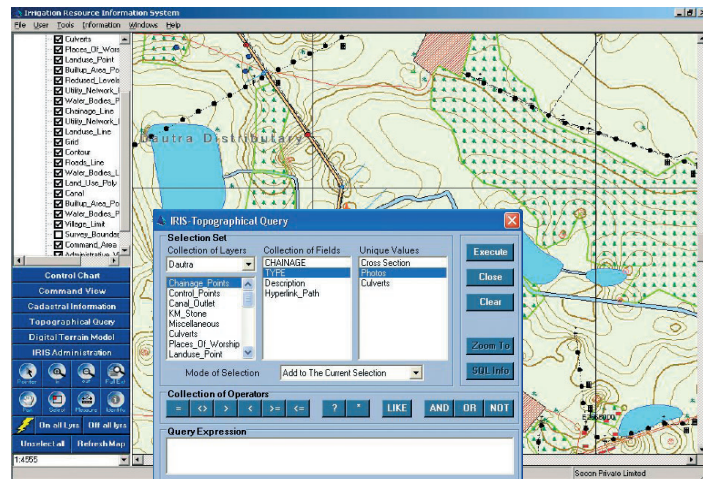
SECON's practice areas include:

- Comprehensive Engineering and Mapping solutions for Highways, Irrigation, Cross Country Pipelines, Infrastructure, Public Health Engineering etc. on Onshore - Offshore model
- Web-enabled Enterprise GIS and Software Development
- Photogrammetry, LiDAR and Satellite Image Processing
- GIS/ CADD Data Development and Maintenance
- Engineering Design Solutions

Introduction

Uttar Pradesh Water Sector Restructuring Project (UPWSRP) aims to promote more sustainable development and use of the state's limited water resources by improving its management, particularly in the irrigation sector as agriculture is an important sector in the state's economy. SECON was awarded the project to undertake survey and investigation services, generation of GIS Database and develop GIS application.

IRIS, developed by SECON lets the user to view comprehensive information relating to the Irrigation sector. IRIS has user-friendly interface specially designed for a novice computer operator to work effortlessly.



GIS Interface

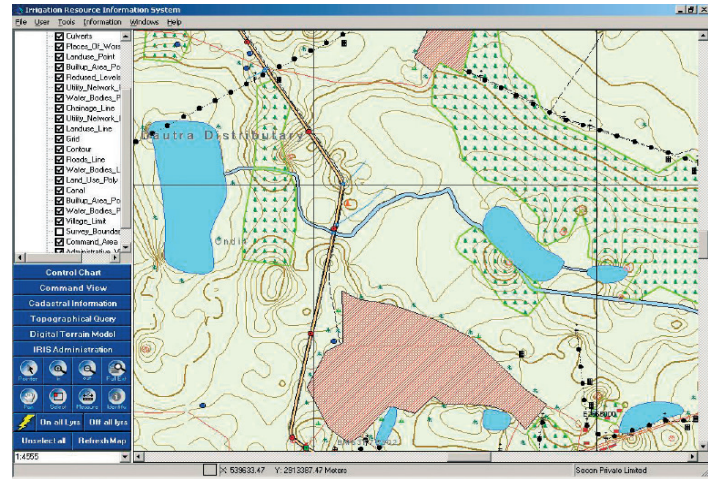
Unlike most irrigation monitoring and assessment methods, community involvement is included as a fundamental operational component in this package. This has been accomplished without compromising on data collection or assessment result integrity.



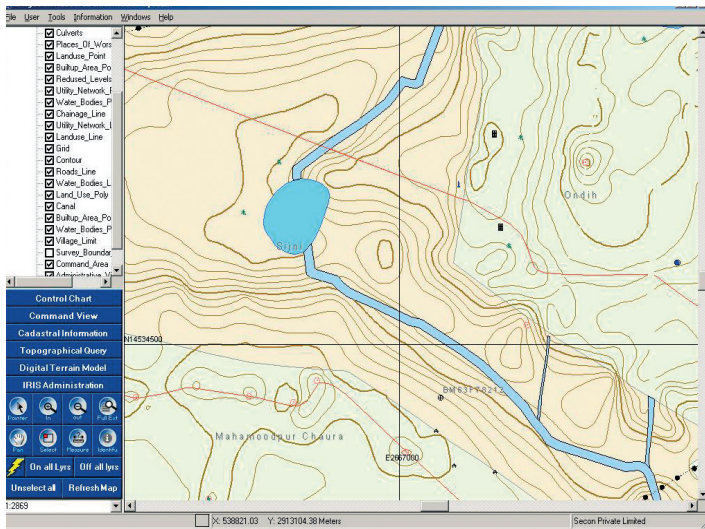
GIS is our Passion. Quality is our Commitment.

Key Features

- User friendly interface
- Provision to query, view and modify design and existing details of canals and irrigation structures
- View comprehensive details of command area
- Easy retrievability of GPS Benchmarks, Cadastral Information, Topographic details like Control Points, Landuse Points, and Culverts
- Query and view of sensitive areas like Temples, Schools, Hospitals, Burial grounds, etc.



Control Network Query



Contour Map

- Details of communication network such as Transportation, Telephone lines and Power lines
- Query and view cadastral details like area of a selected survey number and its Khatauni details (details related to land and village)
- Select and view total area of selected multiple survey numbers
- Easy availability of Elevation data using DTM
- View related documents and photos from a single interface
- Secured data access

Advantages

The application allows authorised staff to upload, assess, and extract their data on demand and in a geographic context. Among other features, a cartographic interface allows users to query and view geographic details of catchment area in an irrigation network. The tailor made geo-database is used to monitor water resource data.

IRIS helps water resource agencies lower operational costs while improving the effectiveness of their monitoring programs and the quality of services.

IRIS can be customized to cater to client's requirement. As a further enhancement, the application is ported to ArcGIS Server to support multi-user capability through internet.

IRIS is specially designed keeping in mind the continuous requirement of engineers at various levels in irrigation department to manage significant and voluminous data, with minimal training.

Contact Us

Bangalore Operations Center

Plot #147, 7B Road, Export Promotion Industrial Park (EPIP), Whitefield, Bangalore - 560 066 INDIA

Branch offices: Mumbai, New Delhi, Vadodara, Bhopal and Hyderabad

Phone: (91) 80-41197778 Fax: (91) 80-41194277 Email: feedback@secon.in