



Gas Distribution Network System

Comprehensive package for City Gas Distribution Network

<http://www.secon.in>

About SECON

SECON is an ISO 9001:2015, NABL Accredited and CMMI Level 3 Certified Multidiscipline Engineering and Mapping Firm, established in 1981. SECON provides end-to-end services on Geospatial & Engineering including Data Capture, Processing, Design & Drafting, GIS Based Customization and Application Development.

SECON's practice areas include:

- Comprehensive Engineering and Mapping solutions for Highways, Irrigation, Cross Country Pipelines, Infrastructure, Public Health Engineering etc. on Onshore - Offshore model
- Web-enabled Enterprise GIS and Software Development
- Photogrammetry, LiDAR and Satellite Image Processing
- GIS/ CADD Data Development and Maintenance
- Engineering Design Solutions

Introduction

“ An online web based system to manage City Gas distribution Network ”

It is a GIS based handling of city gas network in web by maintaining up-to-date information in centralized enterprise database with support to Analysis, Engineering, Operation & Maintenance, Planning, etc.

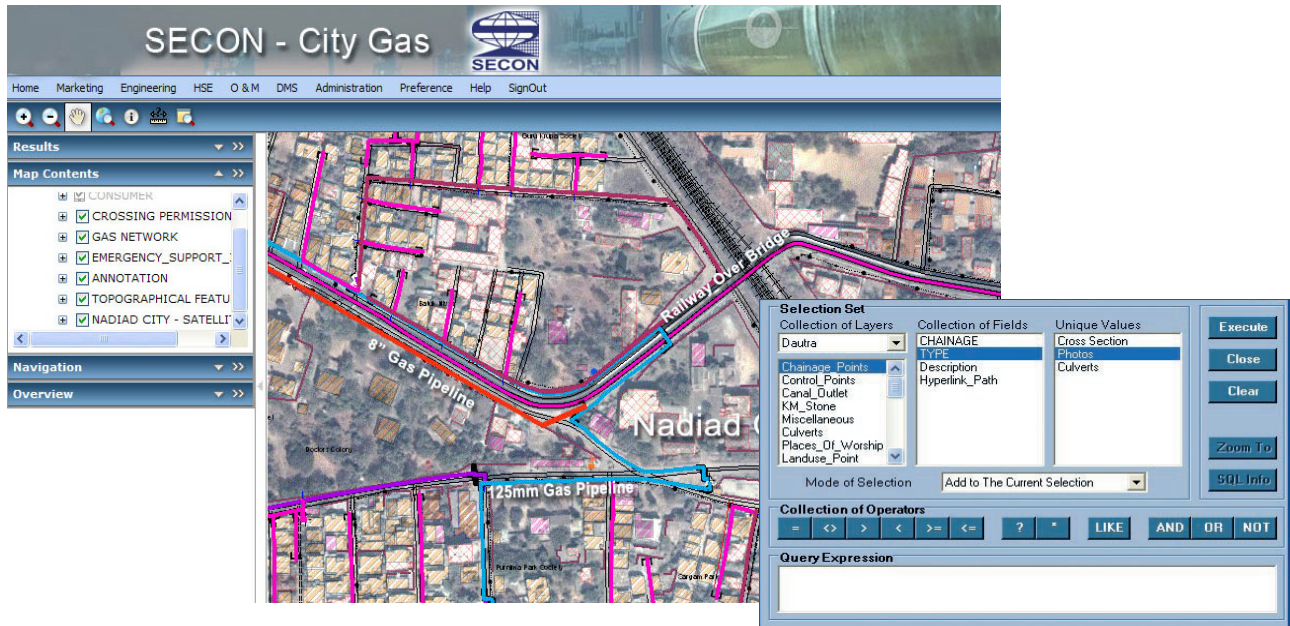
Valuable decision support system for planning & emergency response and an effective marketing tool for gas distribution companies.



GIS is our Passion. Quality is our Commitment.

SECON City GAS solution offers:

- Easy retrieval of information related to
 - Detailed map features, Roads & existing utility networks, As-Built details
 - Existing & Potential Consumers
 - Emergency assisting centers/locations/information's
- Links to
 - Billing information & Consumer information
- Customized Query & report generation for
 - Gas usage statistics and Maintenance statistics, etc.



Other Benefits:

- Integrated application with up-to-date information – customer info, engineering info, document management, MIS reports, risk modeling
- Application is designed to imbibe data capture efficiency, manage regulatory & internal HSE process compliance
- Valuable Decision Support System for planning and emergency response
- Application can be an effective marketing tool to understand consumer preferences and design innovative products
- Web / Email integration for corporate & field staff
- Improved maintenance response system for carrying out field activities

Contact Us

Bangalore Operations Center

Plot #147, 7B Road, Export Promotion Industrial Park (EPIP), Whitefield, Bangalore - 560 066 INDIA

Branch offices: Mumbai, New Delhi, Vadodara, Bhopal and Hyderabad

Phone: (91) 80-41197778 Fax: (91) 80-41194277 Email: feedback@secon.in