

Pipeline Construction Manager

Comprehensive package for Monitoring Pipeline Construction Process



<http://www.secon.in>

About SECON

SECON is an ISO 9001:2015, NABL Accredited and CMMI Level 3 Certified Multidiscipline Engineering and Mapping Firm, established in 1981. SECON provides end-to-end services on Geospatial & Engineering including Data Capture, Processing, Design & Drafting, GIS Based Customization and Application Development.

SECON's practice areas include:

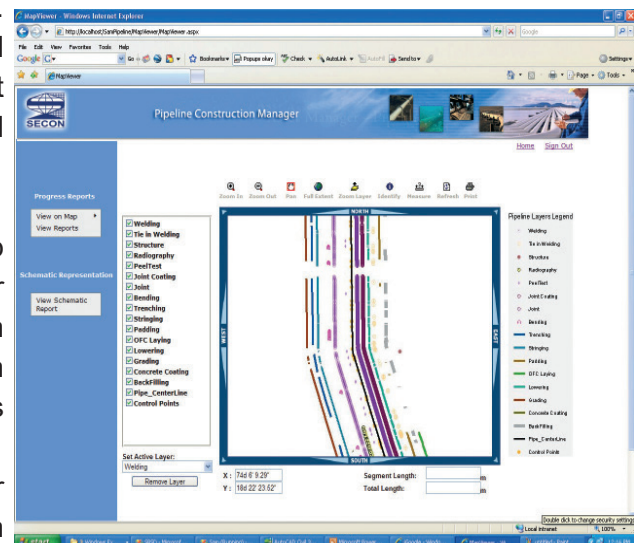
- Comprehensive Engineering and Mapping solutions for Highways, Irrigation, Cross Country Pipelines, Infrastructure, Public Health Engineering etc. on Onshore - Offshore model
- Web-enabled Enterprise GIS and Software Development
- Photogrammetry, LiDAR and Satellite Image Processing
- GIS/ CADD Data Development and Maintenance
- Engineering Design Solutions

Introduction

Pipeline is the heart-line of Oil and Gas transportation. There is an increasing demand for sophisticated and advanced tools to cater to pipeline Project Implementation, Asset Management, Operation and Maintenance.

Pipeline Construction Manager (PCM) is an one-stop solution for tracking the entire construction process for cross country pipelines. The web based interface on the system allows the user to monitor the construction process on a real time basis with various progress monitoring tools & dynamic reporting.

Pipeline Construction Manager provides faster & efficient data access with an effective decision making platform. It also offers support for additional customization as per requirement



Map Viewer



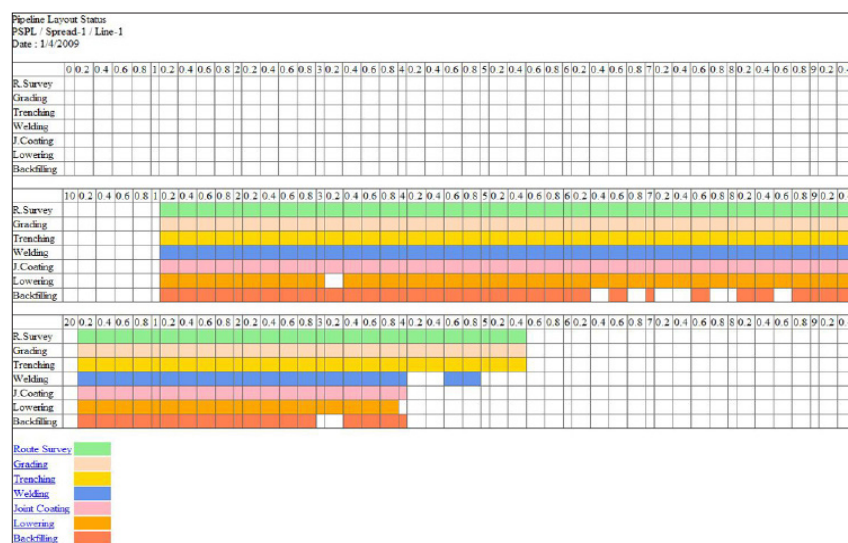
GIS is our Passion. Quality is our Commitment.

Salient Features:

- Dynamic Pipebook generation
- GIS enabled Map Viewer through which the construction work can be viewed graphically.
- Categorized Document Management System
- Overall Management Information System and reports with graphical representations
- Web-based Pipeline Maintenance, Data Capturing and Monitoring System
- Pipeline Layout Status
- Secured Data Access and accessibility through LAN/ WAN/ WEB

Modules:

- Project Management
- Land Acquisition
- Progress Reports
- Document Management
- Station Reports
- Administration



Report Status

Reporting Features:

Day's and cumulative project progress reports for -

- Route Survey
- ROW Clearing and Grading
- Trenching
- Stringing
- Concrete Weight Coating
- Cold Field Bending
- Lining-up and Welding
- Weld Joint Radiography
- Field Joint Coating and Repair
- Lowering
- Tie-In Welding
- Back Filling
- OFC Laying

- Generation of Pipebook
- Hydro testing reports with calculation steps
- Crossing activities and pigging details
- Land Acquisition Process reports

Advantages:

- Online administrative monitoring and immediate feedbacks
- Decision support MIS and status reports
- Integrated with GIS based spatial data
- The system is compliant to any Relational Database like Oracle, SQL Server etc.
- Scope of further customization based on the requirements

Contact Us

Bangalore Operations Center

Plot #147, 7B Road, Export Promotion Industrial Park (EPIP), Whitefield, Bangalore - 560 066 INDIA

Branch offices: Mumbai, New Delhi, Vadodara, Bhopal and Hyderabad

Phone: (91) 80-41197778 Fax: (91) 80-41194277 Email: feedback@secon.in